



Starrox Industries

QUARTZ ENGINEERED STONE

905 Embassy Centre, 207 Jamnalal Bajaj Marg, Nariman Point, Mumbai - 400021

www.starroxindustries.com | starrox.international@gmail.com | 022 - 2282 1553 / 022 - 2282 1557

Installation Guide

There are 3 ways to install Quartz Kitchen Countertop:

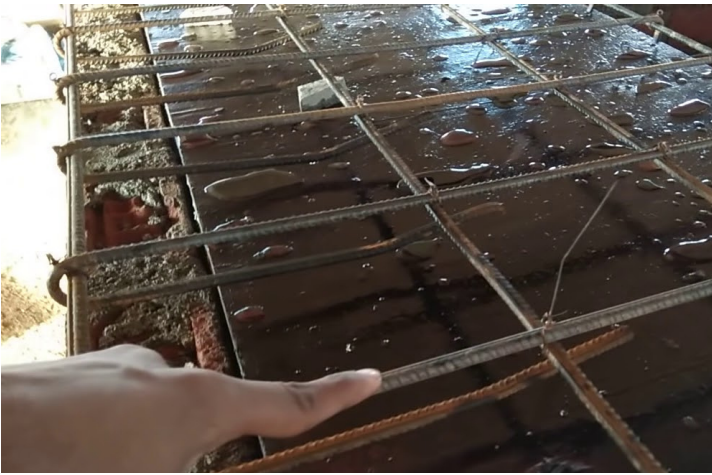
1. RCC Slab Technique
2. Marble Support Technique
3. On Cabinets Technique



RCC Slab Technique

Step 1 : Prepare a Concrete Slab structure using Stainless steel rods and cement mixture.

Step 2 : Place your Quartz Slab on it.



Pros:

1. Very Cost effective.
2. Strength & Durability.
3. No Leakage.

Cons:

1. Consumes more space.
2. Make pre-decision during bricking work



Marble Support Technique

Step 1: Make a structure using marble stone/kadapa stone (insert at least 1.25 inch in wall).

Step 2: Make partitions accordingly.

Step 3: Place a marble/ kadapa slab on structure as base of countertop.

Step 4: Then place Quartz Slab after filling sand cement mixture.



Pros:

1. Cost effective.
2. High Strength & Durability.
3. No Leakage.
4. Termite Proof

Cons:

1. Pre designing of partition, shelves.
2. Needed skilled labour.



On Cabinet Technique

Basic structure is made of wooden ply.

Then Quartz slab is placed on it using Adhesives.



Pros:

1. No pre designs are required.
2. Easily movable

Cons:

1. Comparatively low strength
2. High Cost
3. Leakage problems
4. May attract termites